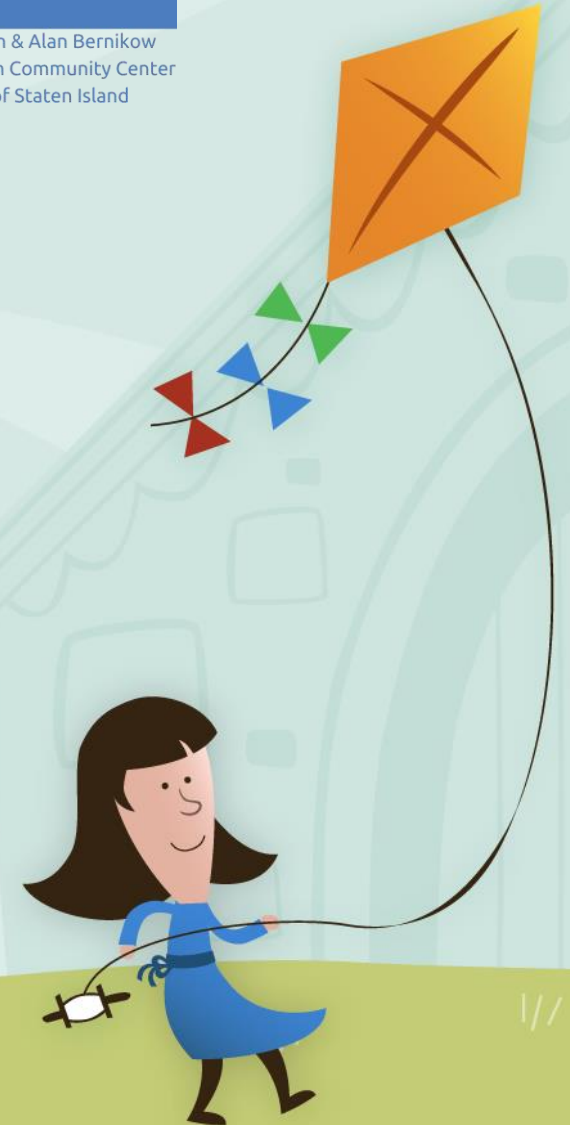




Joan & Alan Bernikow  
Jewish Community Center  
of Staten Island

# ORIENTATION

FIRST FOOT FORWARD 2020-21



# Our Programs



## SPECIAL CLASSES

- 8:1:2
- 12:1:2

## SPECIAL CLASS IN AN INTEGRATED SETTING



# Agenda

- Reopening plan
- Required Paperwork
- A typical day of school
- PBIS
- Therapy
- Communication with staff
- Documenting children's progress
- Snacks and celebrations
- Questions?



Joan & Alan Bernikow  
Jewish Community Center  
of Staten Island



# Reopening Plans



Joan & Alan Bernikow  
Jewish Community Center  
of Staten Island

Our plan was created in conjunction with guidance from State Education, State Department of Health and CDC

## Safety Guidelines

- Cleaning/disinfecting
- Daily health screening
- Masks
- Modifications to classrooms and routines
- Equity



# Safety



Joan & Alan Bernikow  
Jewish Community Center  
of Staten Island

- Daily health screening
- Arrival/departure procedures
- Illness policy
- Social Distancing Measures
- Masks
- Visitors



# Cleaning and Disinfection



Joan & Alan Bernikow  
Jewish Community Center  
of Staten Island

Cleaning and disinfection is everyone's responsibility

- Classroom materials will be limited
- Children will have a box of individual writing instruments and other items
- Used items, will be placed in a ‘yuck” bucket for cleaning
- Children will get a stamp on their hand at the start of each task and will need to wash their hands before starting a new task
- Logs will be posted and saved for inspection from DOHMH



# Illness



Joan & Alan Bernikow  
Jewish Community Center  
of Staten Island

## Daily Health Screening

- Children temperature check
- Exclusion
- Temperature over 100 degrees
- Symptoms specific to COVID 19 or MIS-C

## In the event of illness

- Isolation room
- Parent notified to pick up
- Siblings
- Doctor Note
- Notification to DOHMH upon confirmation of positive COVID test



# Social Distancing Measures/Equity

- Some furnishings have been removed from the classroom
- Children enrolled in the 8:1:2 classroom will attend 5 days per week
- All other classrooms will operate in a blended model
  - Group A- Week 1 -M, T , W                      week 2- M, T
  - Group B- Week 1-TH, F                      Week 2- W, Th, F
- Google classrooms will support children when they are not in school
- Therapy services will be provide both in person and remotely



Joan & Alan Bernikow  
Jewish Community Center  
of Staten Island





# Masks



Staff will wear masks  
and other PPE

Children will be  
required to wear masks

Mask Breaks

Accommodations



# Visitors

We are currently not allowing any visitors to the school with the exception of:

- People with legal authority
- Professionals who provide mandated services



# Questions



Joan & Alan Bernikow  
Jewish Community Center  
of Staten Island



# Paperwork

Emergency/Medical information form

Emergency Medical Permission

Emergency Contact/Escort Form

Medicals/Immunizations

Allergy Alert

Photo/Video Release

Medicaid Consent and OT/PT Order for Service

Illness policy and other information sheets



Joan & Alan Bernikow  
Jewish Community Center  
of Staten Island



# Medicals

Annual Medical Form

Must include:

lead screening/blood test

immunizations

signature and stamp

Influenza ( flu)Vaccine is required



# Medicaid



Joan & Alan Bernikow  
Jewish Community Center  
of Staten Island

- Parent Consent Forms
- Order for School Health Related Support Services
  - Occupational Therapy
  - Physical Therapy



# Therapy

- Children are seen as mandated on their IEP.
  - Children who receive group session may be seen with children in their class.
  - Children are seen in the therapy rooms and in some cases as push in during class time.
  - Therapists use communication books to assist you in supporting the goals at home.



# A Day at School



- Arrival
- Units of Study Pre K Common Core/  
Early Learning Outcomes Framework
- Sandford Harmony/Instill SEL
- Classroom activities
  - Manipulative table toys
  - Circle/morning meeting time
  - Small group and individual instruction
  - Outdoor play
  - Lunch/Snack





# Communication



Joan & Alan Bernikow  
Jewish Community Center  
of Staten Island

- Communication books are used with the therapists as well as the classroom staff.
- Classrooms all have telephones for emergencies.
- Living Tree
- Google Classrooms
- Parent Teacher Conferences



# Documenting Children's Progress

- Brigance Early Inventory
- ASQ
- Observations
- Portfolio materials
- Quarterly updates
- Annual/ Requested Reviews



Joan & Alan Bernikow  
Jewish Community Center  
of Staten Island



# Family Involvement



Joan & Alan Bernikow  
Jewish Community Center  
of Staten Island

- All engagement activities will be provided remotely
- Engagement activities
- Parent Workshops



# Meals, Snacks and Celebrations

- In process to get funding for meals
- Guidelines from the Department of Health
  - Low sugar and salt snacks
  - Only 100% juice (twice weekly)
  - Water and low-fat milk
- Birthday Celebrations
- Holiday Celebrations
- Packaged Kosher goods



# Positive Behavioral Intervention Supports

## School Success

- Children need
  - Confidence
  - Build relationships
  - Concentrate
  - Communicate
  - Listen and be attentive
  - Solve social problems



## Targeted supports

- Effective instructional and management strategies for small and large groups
  - Targeted social and emotional supports
  - Curriculum
- Staff Training
- Intensive Intervention- FBA/BIP



# At the JCC

## Students and Teachers are

### Accepting Respectful and Safe



Joan & Alan Bernikow  
Jewish Community Center  
of Staten Island

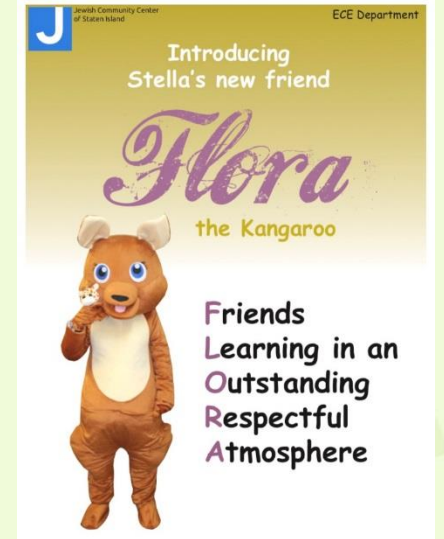


- Striving
- Towards
- Excellence
- Love
- Learning &
- Academics



## Hal

- Happy
- Accepting
- Loving



# Please share with us

- If you have a custody agreement
- If your child has food allergies
- If you have any concerns.....we are here to help



# In the beginning...

- Separation
- What to send
  - Change of clothing (3)
  - Diapers/wipes
  - Child size backpack
  - Marble notebook/communication
  - Lunch
  - Tissues
  - Special snacks/ dietary restrictions



Joan & Alan Bernikow  
Jewish Community Center  
of Staten Island



# Questions? Contacts

- Jayne M. Smith- Chief Program Director for Early Childhood and Disability Services- [jsmith@sijcc.com](mailto:jsmith@sijcc.com)
- Dawn Gallis- Assistant Early Childhood Director- [Dgallis@sijcc.com](mailto:Dgallis@sijcc.com)
- Stephanie Kosnik- First Foot Forward Coordinator- [skosnik@sijcc.com](mailto:skosnik@sijcc.com)
- Tanya Laughlin- First Foot Forward Coordinator- [tlaughlin@sijcc.com](mailto:tlaughlin@sijcc.com)
- Stephanie Prasenski- Early Childhood Coordinator- [sprasenski@sijcc.com](mailto:sprasenski@sijcc.com)

